

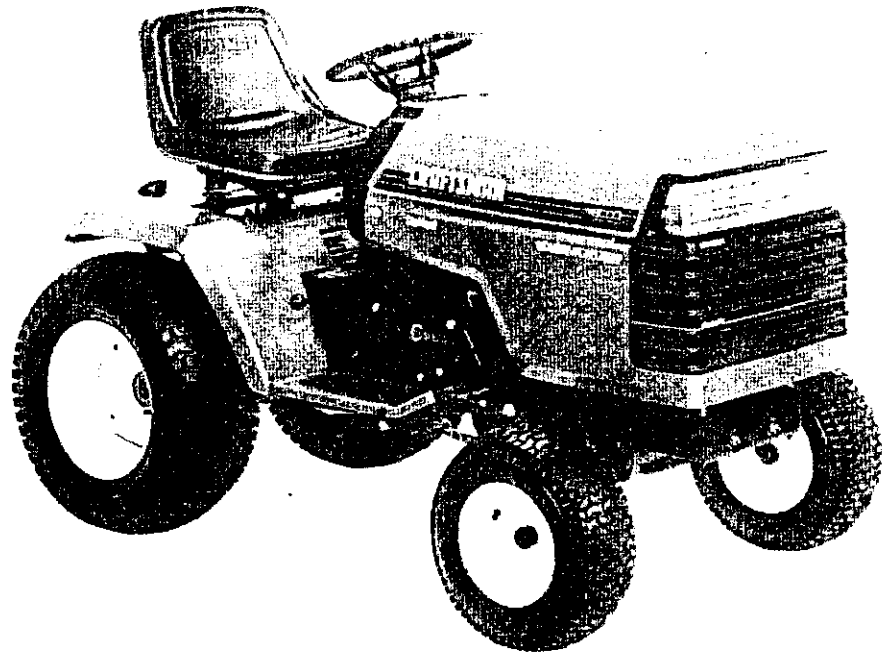
SEARS

CRAFTSMAN

MODEL NUMBER 917.250051 OWNER'S MANUAL

- **Assembly**
- **Operation**
- **Customer Responsibilities**
- **Service**
- **Adjustments**
- **Repair Parts**

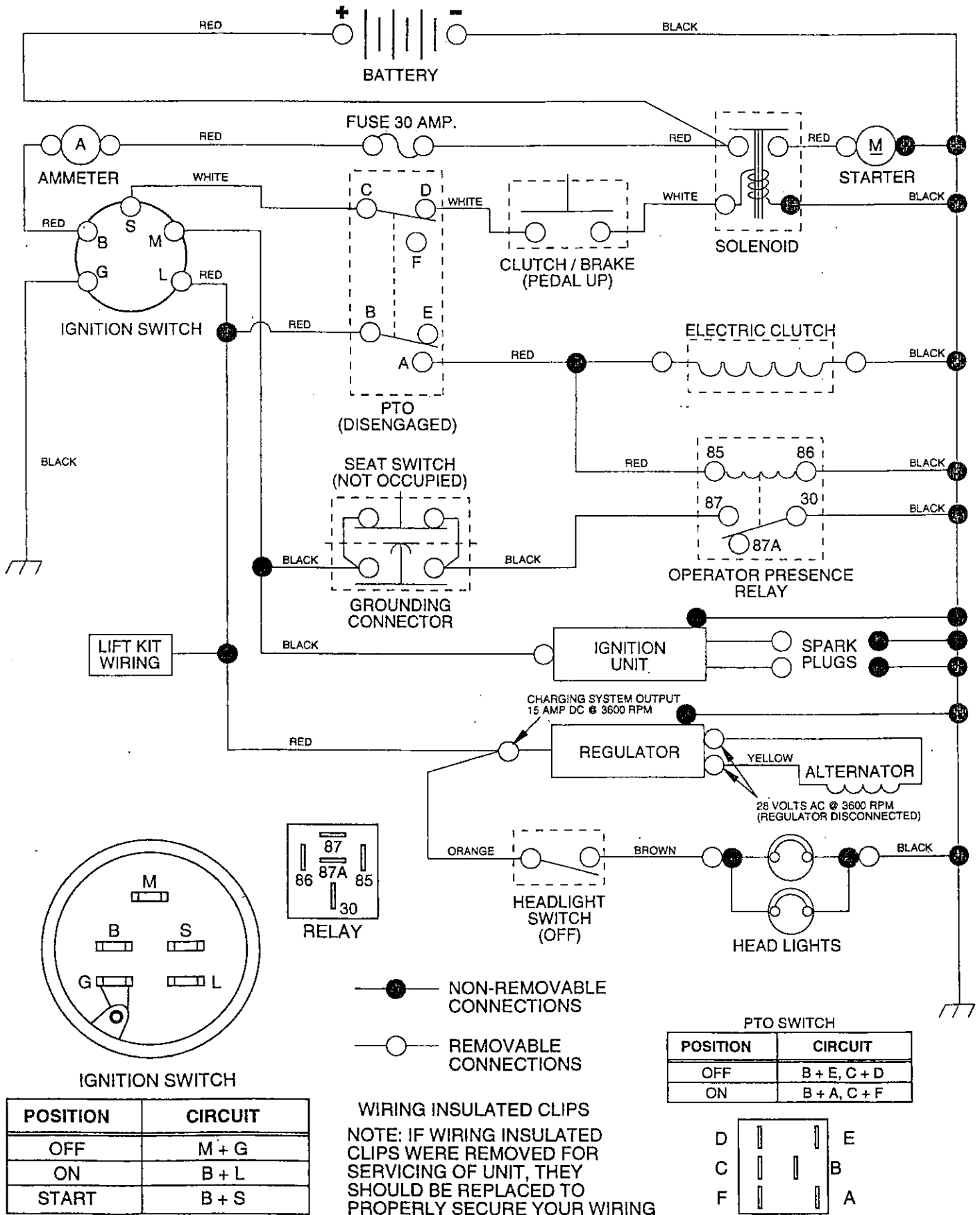
Caution:
Read and Follow
all Safety Rules
and Instructions
Before Operating
This Equipment



Sears, Roebuck and Co., Hoffman Estates, IL 60179 U.S.A.

20 HP TRACTOR - - MODEL NUMBER 917.250051

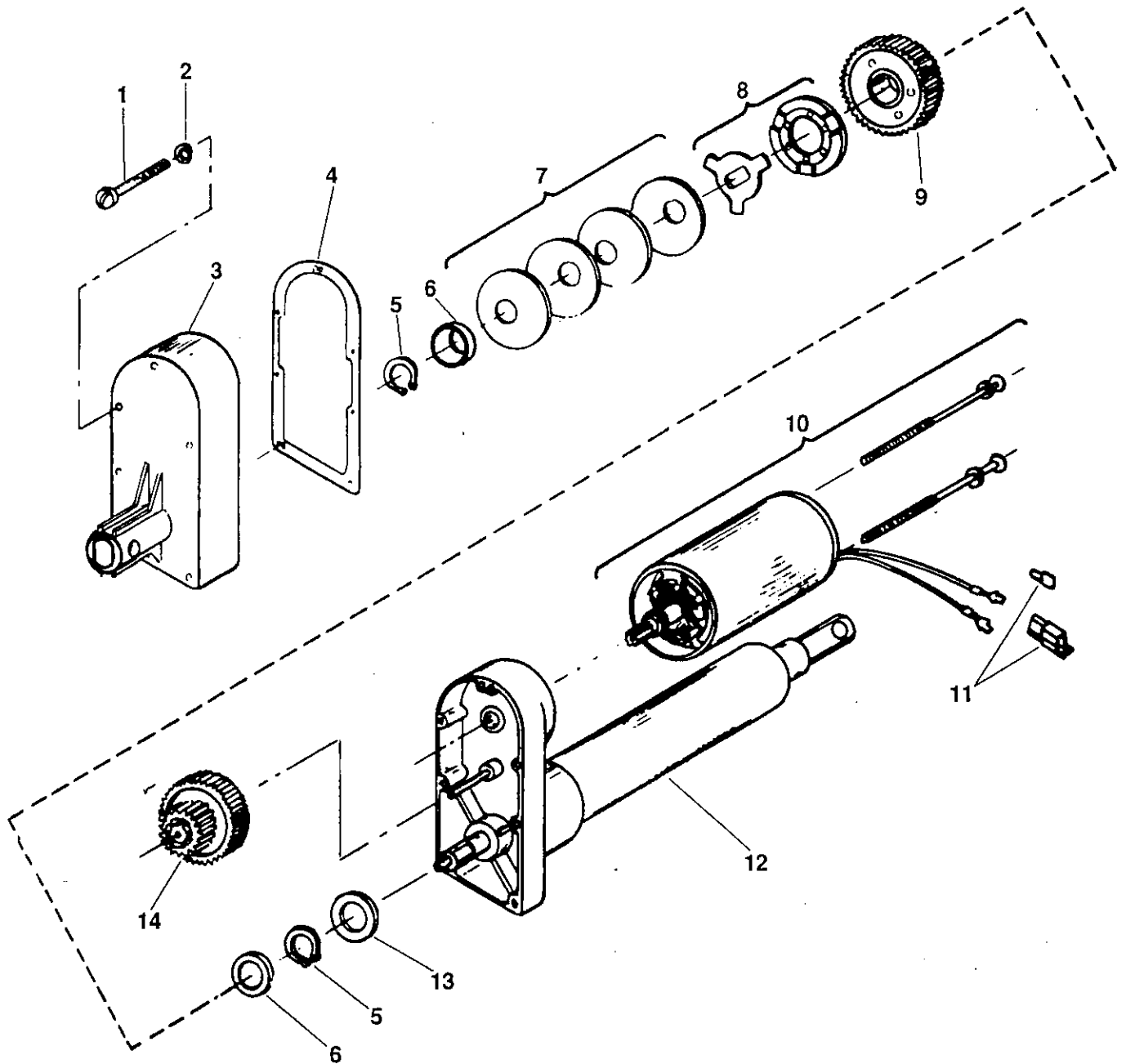
SCHEMATIC



REPAIR PARTS

20 HP TRACTOR -- MODEL NUMBER 917.250051

ELECTRIC LIFT ACTUATOR



KEY NO.	PART NO.	DESCRIPTION
1	1862J	Screw - Sl. Fil. Hd. Mach. No. 10-32 x 1-5/8
2	1863J	Lockwasher - No. 10
3	8331J	Housing Cover
4	1857J	Cover Gasket
5	1865J	Snap Ring
6	1864J	Retaining Ring
7	677A149	Spring Washer (Use 3 or 4 as req'd.)

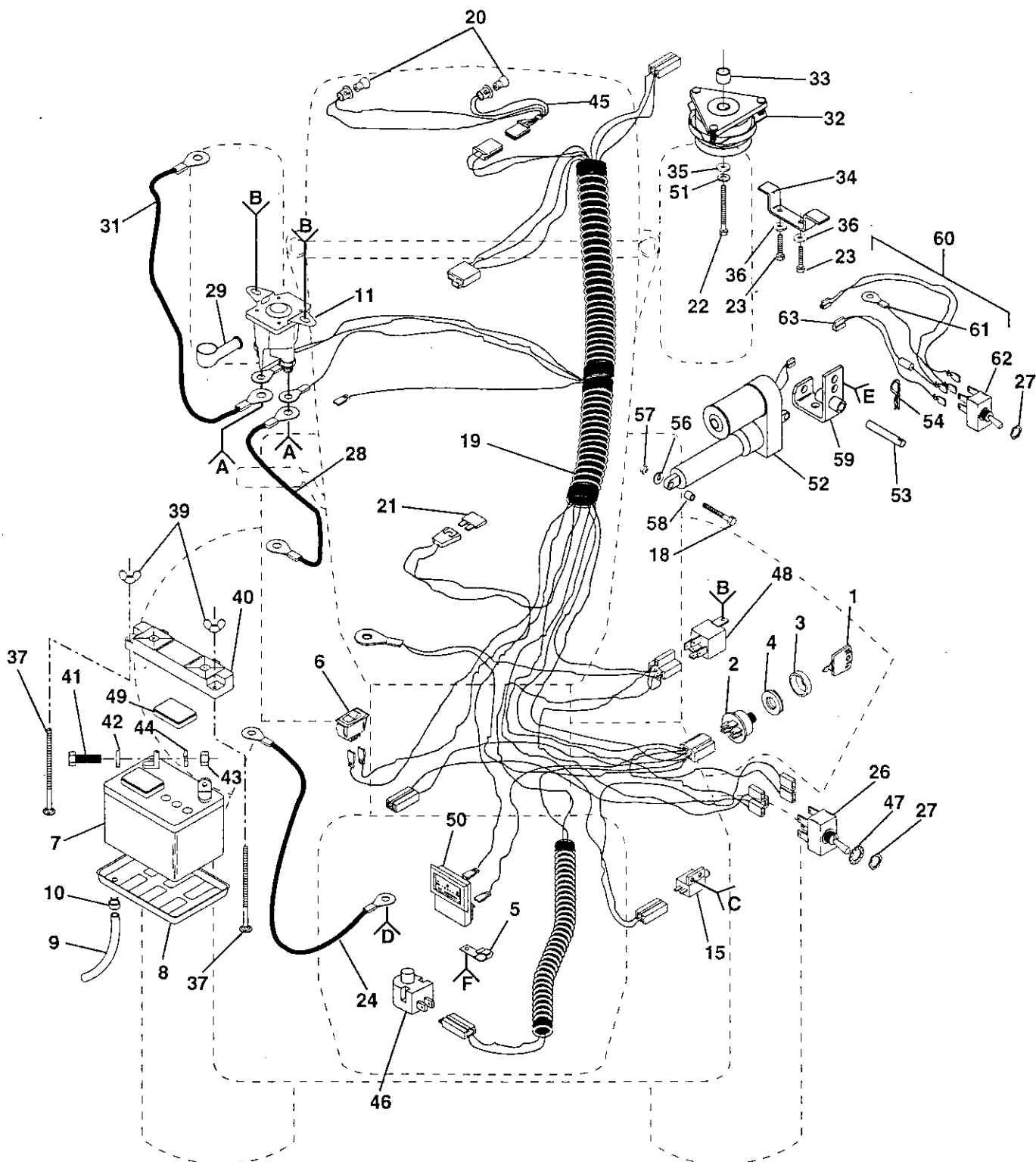
KEY NO.	PART NO.	DESCRIPTION
8	674A281	Pawl & Ramp Washer
9	1859J	Out put Gear
10	1861J	Motor - 12V
11	673A218	Connector Body Kit
12	---	Not Serviced Separately Order complete actuator Part# 124371X
13	1860J	Thrust Washer
14	1858J	Intermediate Gear

REPAIR PARTS

20 HP TRACTOR -- MODEL NUMBER 917.250051

ELECTRICAL

- | | | | | | |
|----------|----------|----------|----------|----------------|----------|
| A | B | C | D | E | F |
| 12
13 | 14 | 16
17 | 25 | 55
56
57 | 30
17 |



REPAIR PARTS

20 HP TRACTOR - - MODEL NUMBER 917.250051

ELECTRICAL

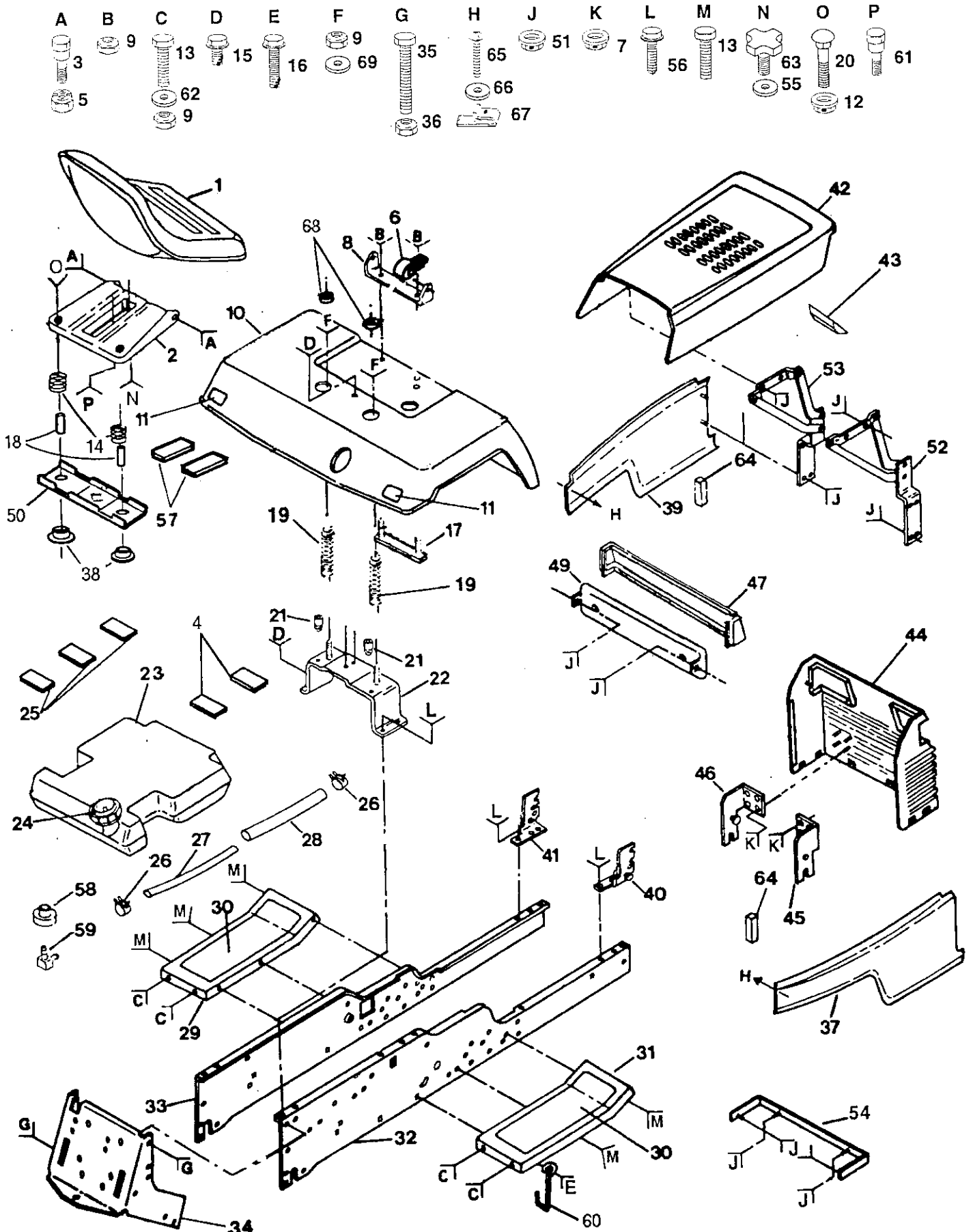
KEY PART NO.	NO.	DESCRIPTION	KEY PART NO.	NO.	DESCRIPTION
1	109310X	Key	34	110882X	Stop, Clutch
2	STD365402	Switch, Ignition	35	126197X	Washer 1-1/2 x 15/32 x .250
3	123620X	Cover, Key Switch	36	STD551137	Washer, Lock 3/8
4	124211X	Nut, Ignition	37	72240460	Bolt, Carriage 1/4-20 x 7-1/2
5	4171R	Clip	39	123198X	Nut, Wing 1/4-20
6	110712X	Switch, Light	40	102476X	Guard, Terminal
7	121537X	Battery	41	STD522507	Bolt, Hex Head 1/4-20 x 3/4
8	7603J	Tray, Battery	42	STD551025	Washer 9/32 x 5/8 x 16 Gauge
9	7697J	Tube, Battery Drain	43	STD541025	Nut, Hex 1/4-20
10	109596X	Clamp, Hose	44	STD551125	Washer, Lock 1/4
11	138406	Solenoid	45	136850	Harness, Light Socket (Includes Key #20)
12	10090400	Washer, Lock 1/4	46	121305X	Switch, Plunger
13	STD541225	Nut, Hex, Jam 1/4-20	47	19171216	Washer 17/32 x 3/4 x 16 Gauge
14	17720408	Screw Thd. Cut. 1/4-20 x 1/2 TY23	48	109748X	Relay, Operator Presence
15	104445X	Switch, Interlock	49	121264X	Cap Set, Battery
16	71031008	Screw, Hex Washer Head #10-32 x 1/2	50	122822X	Ammeter
17	73951000	Nut, Hex, Keps #10-32	51	10040700	Washer, Lock, Heavy Helical Spring 7/16
18	74520636	Bolt, Hex 3/8-16 x 2-1/4 Grade 5	52	124371X	Actuator, Electric
19	139207	Harness, Ignition	53	7085J	Pin, Actuator
20	4152J	Bulb, Headlight	54	4940M	Retainer, Spring
21	108824X	Fuse	55	72110608	Bolt, Carriage 3/8-16 x 1 Grade 5
22	71130724	Bolt, Hex Head, Fin. 7/16-20 UNF x 1-1/2 Grade 8	56	10040600	Washer, Lock Hvy Hlcl Spr 3/8
23	STD523707	Bolt, Hex Head 3/8-16 x 3/4	57	73220600	Nut, Hex 3/8-16
24	121080X	Cable, Ground	58	5950J	Bushing
25	11050600	Washer, Lock, External Tooth 3/8	59	677A886	Bracket Asm. Actuator
26	4021J	Switch, P.T.O.	60	131133	Harness Asm. Lift Switch
27	4022J	Nut, Hex	61	9698R	Ground Wire
28	4799J	Cable, Battery	62	8984R	Lift Switch
29	131563	Cover Terminal	63	127017X	Lift Harness
30	74641008	Screw #10-32 x 1/2			
31	129458	Cable, Starter			
32	127170X	Clutch, Electric			
33	128224	Spacer, Clutch			

NOTE: All component dimensions given in U.S. inches
1 inch = 25.4 mm

REPAIR PARTS

20 HP TRACTOR -- MODEL NUMBER 917.250051

CHASSIS AND ENCLOSURES



REPAIR PARTS

20 HP TRACTOR - - MODEL NUMBER 917.250051

CHASSIS AND ENCLOSURES

KEY PART NO. NO.	DESCRIPTION	KEY PART NO. NO.	DESCRIPTION
1	127439	Seat	
2	131451	Pan, Seat	
3	105529X	Bolt, Shoulder	
4	109227X	Pad, Spacer	
5	73680500	Nut, Crownlock 5/16-18	
6	2751R	Clip	
7	120579X	Nut, Pal	
8	126656X	Bracket, Pivot, Seat	
9	73680600	Locknut 3/8-16	
10	121642X459	Fender	
11	106202X	Reflector, Taillight	
12	123976X	Nut, Hex Flange Head 1/4-20	
13	STD523707	Bolt, Hex Head 3/8-16 x 3/4	
14	123740X	Spring	
15	17490608	Screw, Hex Washer Head, Thd., Roll. 3/8-16 x 1/2	
16	17490616	Screw, Hex Washer Head, Thd., Roll. 3/8-16 x 1	
17	105511X	Strap, Fender	
18	121249X	Spacer, Split	
19	124181X	Spring, Compression	
20	72050411	Bolt, Carriage 1/4-20 x 1-3/8	
21	105531X	Nut, Push	
22	105509X	Bracket, Fender	
23	127334X	Fuel Tank	
24	123549X	Cap, Fuel Tank	
25	106082X	Pad, Spacer	
26	123487X	Clamp, Hose	
27	7834R	Line, Fuel	
28	7833R	Line, Fuel	
29	105465X459	Footrest, L.H.	
30	105466X	Pad, Footrest	
31	105464X459	Footrest, R.H.	
32	138597	Rail, Frame, R.H.	
33	110893X	Rail, Frame, L.H.	
34	7982J	Drawbar	
35	74760716	Bolt, Hex Head 7/16-14 x 1	
36	73800600	Locknut 7/16-14	
37	108403X459	Side Panel, R.H.	
38	121248X	Bushing, Snap	
39	108410X459	Side Panel, L.H.	
40	130523	Bracket, Pivot, Frame, R.H.	
41	121055X	Bracket, Pivot, Frame, L.H.	
42	106013X459	Hood	
43	136532	Bumper Hood	
44	120153X	Grill	
45	108512X	Bracket, Grill Pivot, R.H.	
46	108513X	Bracket, Grill Pivot, L.H.	
47	110898X	Lens, Headlight Bar	
49	132257	Bezel	
50	121246X	Bracket, Switch	
51	108067X	Nut, Pal	
52	106091X	Hinge, R.H.	
53	106090X	Hinge, L.H.	
54	110350X459	Strap, Grill	
55	19171912	Washer 17/32 x 1-3/16 x 12 Gauge	
56	17490612	Screw, Hex Head, Thd., Roll. 3/8-16 x 3/4	
57	121251X	Strip, Foam	
58	3645J	Bushing	
59	139277	Stem, Fuel Tank	
60	105500X	Retainer, Belt, Lower	
61	127018X	Bolt, Shoulder 5/16-18 UNC	
62	19131312	Washer 13/32 x 13/16 x 12 Gauge	
63	120068X	Knob	
64	106088X	Strip, Foam	
65	106909X	Screw, Special	
66	106910X	Washer	
67	108402X	U-Clip	
68	124238X	Cap, Spring	
69	19131614	Washer 13/32 x 1 x 14 Gauge	

NOTE: All component dimensions given in U.S. inches
1 inch = 25.4 mm

REPAIR PARTS

20 HP TRACTOR - - MODEL NUMBER 917.250051

GROUND DRIVE

KEY PART NO. NO.	DESCRIPTION	KEY PART NO. NO.	DESCRIPTION
1 136327	Cover, Wheel Hub	53 73680400	Nut, Crownlock 1/4-20
2 139360	Engine, Kohler, 20 HP, Model No. M20QS, Type No. 49634	54 122253X	Rod, Shift, Hi-Lo
3 74780412	Bolt, Hex Head 1/4-20 x 3/4	55 105598X	Bracket, Shift Rod
4 19091212	Washer 9/32 x 3/4 x 12 Gauge	56 106932X	Knob
5 72140610	Bolt, Carriage 3/8-16 x 1-1/4	57 73680500	Locknut 5/16-18
6 128124	Heat Shield, Front	58 122268X	Clip, Spring, Connecting Link
7 17720408	Screw, Hex Head, Thread Cutting 1/4-20 x 1/2	59 110883X	V-Belt
8 127881	Muffler	60 120404X	Bracket, Support, Transaxle
9 108885X	Guard, Muffler	61 74760716	Bolt, Hex Head 7/16-14 x 1
10 19132616	Washer 13/32 x 1-5/8 x 16 Gauge	62 STD551143	Washer, Lock 7/16
11 STD551125	Washer, Lock 1/4	63 137524	Pulley, Transaxle
12 110867X	Base, Engine	64 9204H	Locknut 1/2-20
13 STD523707	Bolt, Hex Head 3/8-16 x 3/4	65 104375X	Shaft, Foot Pedal
14 74780624	Bolt 3/8-16 x 1-1/2	66 121749X	Washer 25/32 x 1-1/4 x 16 Gauge
15 110947X	Guard, Chaft	67 STD571812	Pin, Roll 3/16 x 1-14
16 133692	Spacer Plate, Engine Mounting	68 104601X	Bracket, Interlock
17 73680600	Locknut 3/8-16	69 132755	Control, Throttle
18 121355X	Pulley, Ground Drive	70 17720410	Screw, Hex Head, Thread Cutting 1/4-20 x 1
19 STD551137	Washer, Lock 3/8	71 132777	Control, Choke
20 19131614	Washer 13/32 x 1 x 14 Gauge	72 11050600	Washer, Lock, External Tooth 3/8
21 110895X	Nyliner	73 STD541137	Nut, Hex 3/8-24
22 132922	Kit, Spark Arrester.	74 8883R	Cover, Foot Pedal
23 121063X	Bracket, V-Pulley, Mule Drive	75 677A637	Bracket, Brake
24 72140506	Bolt, Carriage 5/16-18 x 3/4	76 74370612	Screw, Machine, Undercut Flat Head 3/8-16 x 3/4
25 101344L	Pulley	77 74760614	Bolt, Hex Head 3/8-16 x 7/8
26 122825X	Bracket, Flat Idler	78 101122M	Band, Brake
27 122824X	Belt Guard, Mule Drive	79 72140405	Bolt, Carriage 1/4-20 x 5/8
28 19131612	Washer 13/32 x 1 x 12 Gauge	80 STD541025	Nut, Hex 1/4-20
29 72110614	Bolt, Carriage 3/8-16 x 1-3/4	81 7229J	Guide, Brake Rod
30 72140606	Bolt, Carriage 3/8-16 x 3/4	82 1685H	Locknut 5/16-18
31 102403X	Idler, Flat	83 STD533110	Bolt, Carriage 5/16-18 x 3/4
32 STD551037	Washer 13/32 x 13/16 x 16 Gauge	84 5308J	Rod, Brake
33 73680700	Nut, Crownlock 7/16-14	85 7241J	Spring, Compression
34 76020816	Pin, Cotter 1/4 x 1	86 73530600	Nut, Crownlock 3/8-24
35 101358K	Clutch Bracket Assembly	87 100604K	Yoke
36 121356X	Bracket, Clutch, with Bearing (Includes Key Number 98)	88 5102J	Pin, Clevis
37 207J	Washer, Hardened	89 124236X	Cap, Plunger
38 12000039	Ring, Klip	90 136284	Rod, Parking Brake
39 121361X	Idler, Grooved	91 74321016	Screw, Fin. #10-24 x 1
40 STD523715	Bolt, Hex Head 3/8-16 x 1-3/4	92 135758X431	Hub, Wheel and Bushing
41 74760620	Bolt, Hex Head 3/8-16 x 1-1/4	93 7563R	Washer, Thrust, Axle
42 121357X	Spring, Extension, Clutch	94 12000034	Ring, Klip
43 STD570907	Pin, Cotter 3/32 x 3/4	95 1304H	Bolt, Hub
44 101356L	Rod, Clutch	96 2228M	Key, Woodruff
45 104360X	Idler, Flat	97 74760720	Bolt, Hex Head 7/16-14 x 1-1/4
46 121358X	Retainer, Spring	98 105706X	Bearing, Idler
47 19131413	Washer 13/32 x 7/8 x 13 Gauge	99 9858M1	Key, Woodruff
48 121360X	Retainer, Belt	100 5304J	Actuator, Interlock Switch
49 104577X	Adapter	101 214J	Drum, Brake
50 STD523710	Bolt, Hex Head 3/8-16 x 1 Grade 5	102 STD541410	Locknut #10-24
51 17190516	Screw, Hex Head, Thread Cutting 5/16-18 x 1	103 633A109	Assembly, Gearshift Lever
52 STD522507	Bolt, Hex Head 1/4-20 x 3/4	104 2751R	Clip Fuel Line

NOTE: All component dimensions given in U.S. inches
1 inch = 25.4 mm

REPAIR PARTS

20 HP TRACTOR - - MODEL NUMBER 917.250051

STEERING ASSEMBLY

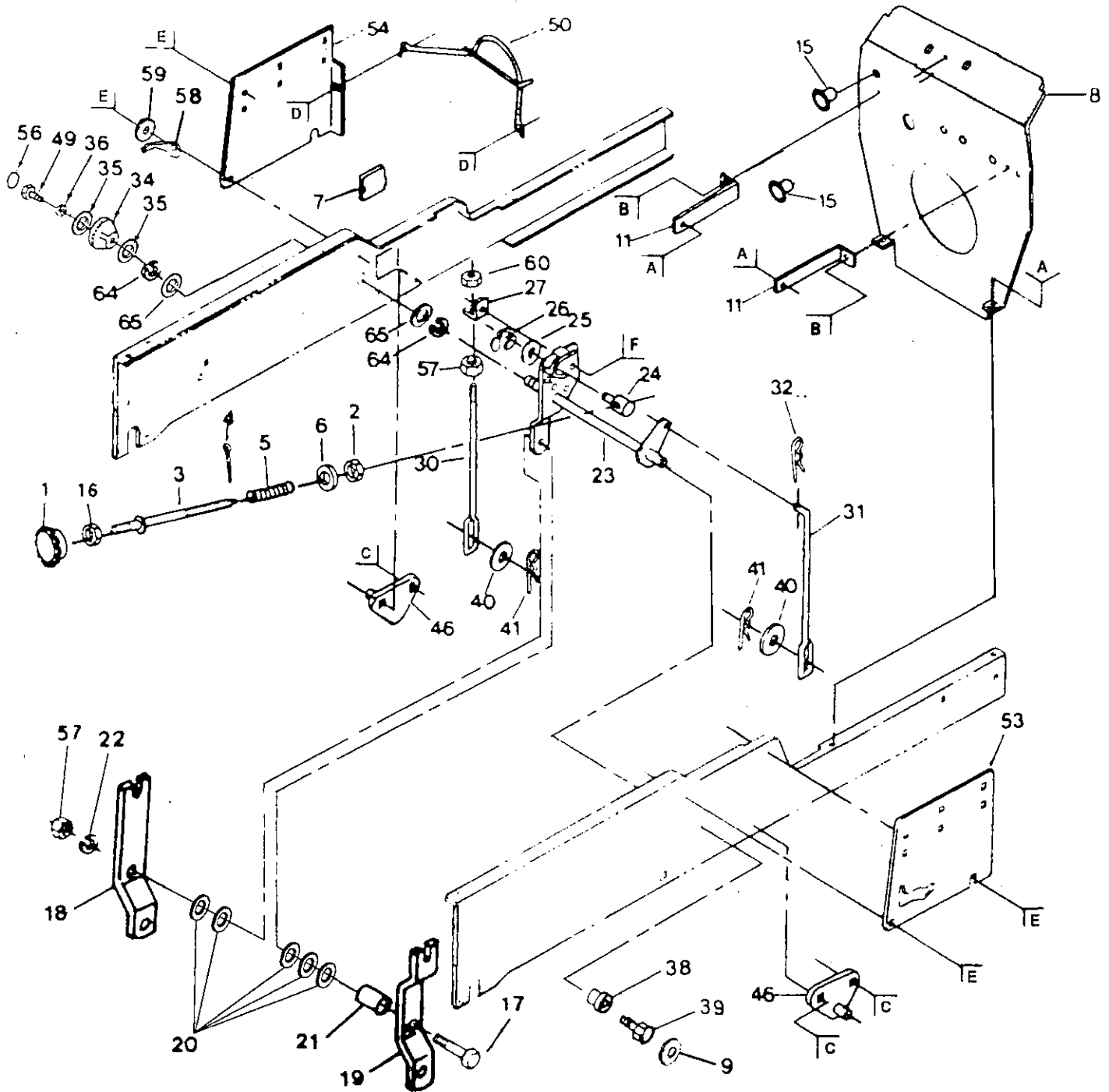
KEY PART NO. NO.	DESCRIPTION	KEY PART NO. NO.	DESCRIPTION
6 106045X	Spindle, R.H.	45 19171416	Washer 17/32 x 7/8 x 16 Gauge
7 6266H	Bearing, Axle	46 72110622	Bolt, Carriage 3/8-16 x 2-3/4
8 12000029	Klip, Ring	47 121235X	Spacer
9 5284J	Bracket, Axle	48 106042X018	Cover, Gate, Shift
10 STD523707	Bolt, Hex 3/8-16 x 3/4	49 17720408	Screw, Hex Washer Head, Thread Cutting 1/4-20 x 1/2
11 73680600	Nut, Crownlock 3/8-16	50 19131212	Washer 13/32 X 3/4 X 12 Gauge
12 137094	Axle, Front (Includes Key No. 13)	51 100710L	Insert, Steering Wheel
13 1309H	Bearing	52 74780880	Bolt, Hex 1/2-13 x 5
14 136518	Spacer, Bearing, Axle, Front	53 73680800	Nut, Crownlock 1/2-13
15 74781044	Bolt, Hex 5/8-11 x 2-3/4 Grade 5	54 19172610	Washer 17/32 x 1-5/8 x 10
17 73681000	Nut, Crownlock 5/8-11	60 STD541037	Nut, Hex 3/8-16
18 6855M	Fitting, Grease	61 5213J	Bracket, Frame Front
19 106046X	Spindle, L.H.	62 73680500	Nut, Crownlock 5/16-18
20 120424X	Sector Assembly	63 137563	Support, Battery
21 110497X	Link, Drag	66 124557X011	Dashplate
22 STD551137	Washer, Lock 3/8	70 109850X	Joint, Tie Rod, R.H. Thread
23 STD541137	Nut, Hex 3/8-24	71 109851X	Joint, Tie Rod, L. H. Thread
24 5292J	Bushing, Bellcrank	72 7919J	Rod, Tie
25 108137X	Bellcrank	73 73700600	Nut, Hex, Jam 3/8-24 L.H.
26 19292016	Washer 29/32 x 1-1/4 x 16 Gauge	74 STD541337	Nut, Hex, Jam 3/8-24 R.H.
27 109849X	Rod, Tie	75 STD533107	Bolt, Carriage 5/16-18 x 3/4
28 74520628	Bolt, Hex Fin 3/8-16 UNC x 1-3/4	76 121749X	Washer 13/32 x 1-1/4 x 16 Gauge
30 102439X	Bracket, Support, Steering	77 121748X	Washer 25/32 x 1-1/4 x 16 Gauge
31 104239X	Bearing, Flanged	82 STD523710	Bolt, Hex 3/8-16 x 1 Grade 5
32 72110608	Bolt, Carriage 3/8-16 x 1 Grade 5	83 100207K	Clip 3/8
33 101274N	Support, Steering	85 120199X	Tube
34 17490612	Screw, Hex Washer Head, Thread Rolling 3/8-16 x 3/4	86 121177X	Collar
35 102458X	Shaft, Steering	87 101496X	Spacer, Split
36 12000034	Klip, Ring	90 121748X	Washer 25/32 x 1-5/8 x 16 Gauge
37 121021X	Wheel, Steering	91 121232X	Cap, Spindle
38 100711L	Adapter, Steering	92 74180412	Screw, Machine 1/4-20 x 3/4
39 19133808	Washer	93 19091216	Washer 9/32 x 3/4 x 16 Gauge
40 121050X	Sleeve, Steering	94 73510400	Nut, Hex, Keps 1/4-20
41 9038R	Bearing	95 4171R	Clip
42 105519X	Dash, Lower		
43 120028X	Dash		
44 105525X	Bracket, Support, Dash		

NOTE: All component dimensions given in U.S. inches
1 inch = 25.4 mm

REPAIR PARTS

20 HP TRACTOR -- MODEL NUMBER 917.250051

LIFT ADJUSTMENT



- | | | | | | |
|----------|----------|----------|----------|----------|----------|
| A | B | C | D | E | F |
| | | | | | |
| | | | | | |
| | | | | | |

REPAIR PARTS

20 HP TRACTOR - - MODEL NUMBER 917.250051

LIFT ADJUSTMENT

KEY PART NO. NO.	DESCRIPTION	KEY PART NO. NO.	DESCRIPTION
1 138057	Knob, Inf 3/8-16	32 4939M	Retainer, Spring
2 110807X	Nut, Special	34 123934X	Scale, Height Indicator
3 110811X	Rod, Adjust, Lift	35 19112410	Washer 11/32 x 1-1/2 x 10 Gauge
4 STD570907	Pin, Cotter 3/32 x 1/2	36 STD551131	Washer, Lock
5 2876H	Spring	37 STD523107	Bolt, Hex Head 5/16-18 x 3/4
6 19131016	Washer 13/32 x 5/8 x 16 Gauge	38 105624X	Hub, Lift Shaft
7 121794X	Cover, Access	39 STD523710	Bolt, Hex Head 3/8-16 x 1
8 127808	Shield, Heat, Rear	46 105501X	Bracket, Suspension, Mower
9 109412X	Cap, Spring	47 STD533707	Bolt, Carriage 3/8-16 x 3/4
10 STD541431	Nut, Crownlock 5/16-18	48 STD541431	Nut, Crownlock 3/8-16
11 128278	Brace, Heat Shield	49 74780516	Bolt, Hex Head 5/16-18 x 1
12 STD522505	Bolt, Hex 1/4-20 x 1/2 Grade 5	50 126651X	Guard, Belt, Engine
13 73680400	Nut, Crownlock 1/4-20	51 STD533110	Bolt, Carriage 5/16-18 x 1
15 110436X	Grommet, Split	52 19111610	Washer 11/32 x 1 x 10 Gauge
16 STD541237	Nut, Hex, Jam 3/8-16 UNC	53 121045X	Panel, Side, RH
17 74520628	Bolt 3/8-16 x 1-3/4 Grade 5	54 121046X	Panel, Side, LH
18 5948J	Bracket, Lift, LH	55 17490608	Bolt, Hex Washer Head, Thd., Rol 3/8-16 x 1/2
19 5947J	Bracket, Lift, RH	56 123935X	Plug, Hole
20 19172410	Washer 17/32 x 1-1/2 x 10 Gauge	57 STD541037	Nut, Hex 3/8-16
21 5949J	Tube .384 x 1-1/2 x 15/16	58 123933X505	Pointer, Height Indicator
23 124217X	Shaft, Lift	59 120529X	Washer, Nylon .44 x .75 x .032
24 110810X	Trunnion, Depth Stop	60 STD541437	Locknut, Hex, Washer Insert 3/8-
25 19151216	Washer 15/32 x 3/4 x 16 Gauge	62 STD541437	Nut, Centerlock 3/8-16
26 12000037	Klip Ring	64 12000022	E-Ring
27 7594J	Bracket, Lift, LH	65 19292016	Washer 29/32 x 1-1/4 x 16 Gauge
28 7901J	Bolt, Shoulder		
29 STD541237	Nut, Hex, Flange 1/4-20		
30 7596J	Link, Lift, LH		
31 105503X	Link, Lift, RH		

NOTE: All component dimensions given in U.S. inches
1 inch = 25.4 mm

REPAIR PARTS

20 HP TRACTOR -- MODEL NUMBER 917.250051

TRANSAXLE

